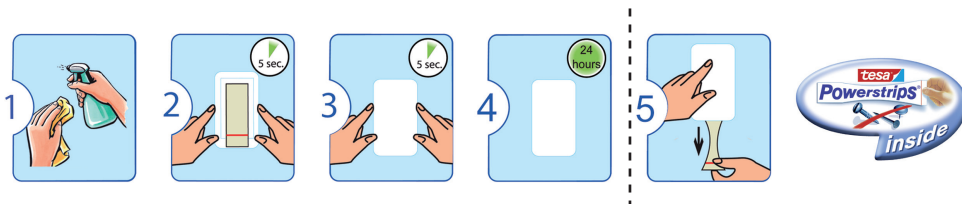


The new B-Smart range uses tesa Powerstrips® technology to provide a tape fix system that eliminates the need for drills, screws and glue. Tesa Powerstrips® can be applied quickly and removed without damaging your wall surface. All wall mounted items can be attached in a few easy steps and removed in just one!



Fixing

1. Remove the base plate from the product by sliding it downwards.
2. The mounting surface must be firm, flat, clean, dry and completely grease free. Clean the mounting surface with a cleaning spirit, such as methylated spirit, prior to fitting the product. Bathroom or multipurpose cleaners are not suitable. (See image 1)
3. Remove the protective cover from one side of the Powerstrips®. Do not remove the transparent cover from the grip-strip located underneath the red line on the Powerstrips®
4. Align the red line on the Powerstrips® with the bottom edge of the base plate and hold firmly in place for 5 seconds. Please ensure that the grip-strip is not obscured in any way. (See image 2)
5. Remove the second protective cover from the Powerstrips® on the rear of the base plate and press the plate down hard on the desired surface for 5 seconds. (See image 3)
6. Leave the base plate for 24 hours to ensure full bond strength. (See image 4)
7. Place the product over the base plate and slide it downwards to secure into position.

Removal

To remove the Powerstrips® slowly stretch the grip-strip tab downwards and parallel to the wall. **IMPORTANT** - Do not pull the strip away at an angle as this may result in the strip tearing. Please ensure the product is held in position whilst removing the Powerstrips® from the wall surface. (See image 5)

Important

The holding power of the Powerstrips® can be reduced if applied to rough and uneven surfaces and if subjected to high air humidity and temperatures above 40°C.

Powerstrips® are not suitable for window panes. Do not attempt to fix if temperatures are under 15°C. Please keep the Powerstrips® away from small children, who may mistake the product for chewing gum.

Do not place the Powerstrips® in direct contact with the water stream from your shower head.